



Sold to another satisfied customer!



Sold to another satisfied customer!

Model number: 57ELP16763MH18

3 beds • 2 baths • 1216 sq.ft. • 16' width • 76' depth

Our home building facilities invest in continuous product and process improvements. Plans, dimensions, features, materials, specifications and availability are subject to change without notice or obligation. Renderings and floor plans are representative likenesses of our homes and may differ from the actual homes. We invite you to tour a Home Center near you and inspect the highest value in quality housing available or call (540) 382-9015 to speak with a Home Consultant. Copyright 2017, CMH. All rights reserved.

<http://claytonhomesofthenewrivervalley.com>

**CLAYTON HOMES-
CHRISTIANSBURG**

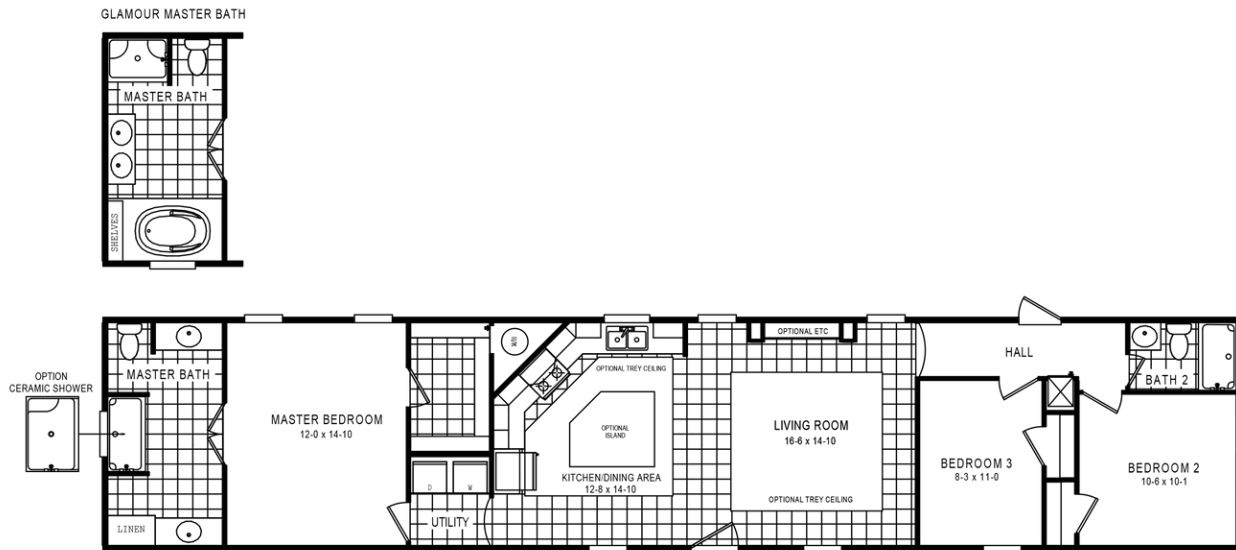
**1340 W. MAIN ST
CHRISTIANSBURG, VA 24073**

Monday - Thursday: 9am - 7pm
Friday: 9am - 6pm
Saturday: 9am - 5pm
Sunday: Closed

(540) 382-9015



Sold to another satisfied customer!



Sold to another satisfied customer! Model number: 57ELP16763MH18

3 beds • 2 baths • 1216 sq.ft. • 16' width • 76' depth

Our home building facilities invest in continuous product and process improvements. Plans, dimensions, features, materials, specifications and availability are subject to change without notice or obligation. Renderings and floor plans are representative likenesses of our homes and may differ from the actual homes. We invite you to tour a Home Center near you and inspect the highest value in quality housing available or call (540) 382-9015 to speak with a Home Consultant. Copyright 2017, CMH. All rights reserved.

<http://claytonhomesofthenewrivervalley.com>

**CLAYTON HOMES-
CHRISTIANSBURG**

1340 W. MAIN ST
CHRISTIANSBURG, VA 24073

Monday - Thursday: 9am - 7pm
Friday: 9am - 6pm
Saturday: 9am - 5pm
Sunday: Closed

(540) 382-9015